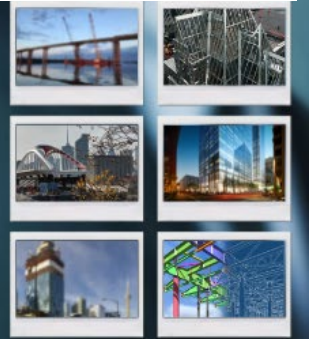


# SteelWeek

## Semaine de l'acier

**Knowledge sharing unlocked!**  
Le partage de connaissances débloqué



	DAY 2 - Structural Steel Pandoras Box	DAY 3 - Cold-form Steel the W5's	DAY 4 - Bridge Day like no other!	DAY 5 - Tools-Tools and more Tools
<b>10:30 AM</b>	Introduction to CISC/CSSBI Steel Week 2021 <b>CISC-ICCA</b>			
<b>11:00 AM</b>	Recent Innovations in Design with HSS <b>ATLAS TUBE</b>	COMSLAB Long Span Composite Floor System <b>BAILEY METAL PRODUCTS LTD.</b>	Modular Bridge Structures <b>ALGONQUIN BRIDGE</b>	Advance Tool for Steel Connections Design and Analysis <b>GRAITEC</b>
<b>11:30 AM</b>	Riverbend 5-Multi-Story Warehouse & Deloitte Summit Tower, 400 W. Georgia <b>SUPERMETAL</b>	IBP - Imperial Building Products Ltd. Proprietary Products <b>IBP – IMPERIAL BUILDING PRODUCTS</b>	Steel Girder Transportation <b>RAPID SPAN BRIDGES</b>	Outil avancé de conception et d'analyse d'assemblages en acier <b>GRAITEC</b>
<b>12:00 PM</b>	Pugwash Salt Mine – Headframe Replacement, Lessons in Steel Craftmanship, Safety and Planning <b>MARID INDUSTRIES LTD.</b>	Simplifying Cold Formed Steel Framing Design <b>ATKINS + VAN GROLL INC</b>	Orthotropic Bridge Decks <b>HARBOURSIDE ENGINEERING CONSULTANTS</b>  <b>CHERUBINI BRIDGES &amp; STRUCTURES</b>	Hot-dip Galvanizing and AESS <b>DAAM GALVANIZING – Edmonton</b>
<b>12:30 PM</b>	The Hambro composite floor system: the preferred choice for multi-residential construction <b>CANAM GROUP INC</b>	Systems – Trade-Ready & C- Joist <b>BAILEY METAL PRODUCTS LTD.</b>	Rapid Bridge Replacement (RBR) Various forms <b>E.S. Fox Ltd.</b>	Le système de plancher composite Hambro : Le choix ideal pour la construction multi-résidentielle. <b>GROUPE CANAM INC.</b>
<b>1:00 PM</b>	Cast steel bolted splice solutions for structural and construction challenges <b>CASTCONNEX</b>	From Sustainability to the next trend in Roofing <b>VICWEST</b>	Essais de capacité rotatives selon ASTM F3125 <b>INFASCO</b>	Hot-dip Galvanizing and AESS <b>DAAM GALVANIZING – Edmonton</b>
<b>1:30 PM</b>	Automation and Robotic Solutions at Burnco Manufacturing Inc. <b>BURNCO MANUFACTURING INC.</b>	Tools & Resources for Designing with Vulcraft Steel Joist & Deck <b>VULCRAFT</b>	Steel Bridges – Design, Fabrication, Construction <b>CISC-ICCA</b>	“Overview of the newest coatings technologies for the corrosion protection of steel”. <b>SHERWIN-WILLIAMS CO.</b>
<b>2:00 PM</b>	Milling Technology applied to CNC machines for the Steel Fabrication Industry <b>FICEP CORP</b>	Cold-Formed Steel - What, Where & Why? <b>CISC-ICCA</b>	Construction methods, stability, and geometry control <b>DPHV</b>	Leveraging the Power of Point Clouds in the Steel Industry <b>BUILDING POINT CANADA</b>
<b>2:30 PM</b>	GirderSlab, an innovative alternative approach to construction <b>BENSON STEEL</b>	Solid Steel Strength: Roofing & Siding Products <b>IDEAL ROOFING COMPANY LTD.</b>		Beam Master + Layout Master: The most efficient and affordable way to fit and weld structural steel with a minimum of staff. <b>AGT ROBOTICS</b>